



PRECISION PAIN CONTROL • *The B. Braun Edge*

B | BRAUN



The B. Braun Edge • WHERE INSIGHT MEETS FORESIGHT

Why do anesthesia practitioners choose regional anesthesia? There are many reasons—among them post-operative pain relief, improved patient healing, faster recovery and quicker discharge.

Why do they choose B. Braun Medical for pain control products? There's one answer: we deliver the edge today's anesthesia practitioners and healthcare facilities are looking for—in quality, experience, technology and service.

From clinical insight to financial foresight, B. Braun supports your need for superior performance and efficiency on every level.

B. BRAUN PAIN CONTROL CAPABILITIES: AN OVERVIEW

In the first five sections of this brochure, you will find a complete guide to B. Braun pain control products, covering a wide range of regional anesthesia applications. The last section provides a detailed look at our extensive support capabilities—including distributor networks, EDI, customization programs, in-service training and many other value-added services.

TABLE OF CONTENTS:

<i>Epidural Products</i>	2-3
<i>Spinal Products</i>	4-5
<i>Combined Spinal/Epidural Products</i>	6-7
<i>Nerve Block Products</i>	8-9
<i>Custom Tray Program</i>	10-11
<i>Value-Added Programs</i>	12-13

B | BRAUN



EPIDURAL

SPINAL

COMBINED SPINAL / EPIDURAL

NERVE BLOCK

CUSTOM TRAYS

The Cutting Edge · INNOVATIVE ANESTHESIA PRODUCTS



PERIFIX® EPIDURAL ANESTHESIA PRODUCTS

Together, Perifix needles and catheters are the ideal combination for epidural anesthesia—offering highly accurate placement and consistent tactile “feel.”

PERIFIX NEEDLES

Because each patient presents a unique anatomical condition, precision and versatility are equally important in epidural procedures. With Perifix needles, you are ensured meticulous construction and reliability—as well as a wide selection of sizes and features to meet any application.

- Convenient 1 cm depth markings make it easier to observe and control the exact depth of insertion into the epidural space.
- Polished inner bevel edges minimize catheter shearing risk.
- Clear hubs offer easy visualization of blood or CSF.
- Precision ground stylets reduce the risk of tissue coring.
- Extensive selection of needles—including Tuohy, Hustead and Crawford, available with or without wings, in 16-22 gauge sizes.



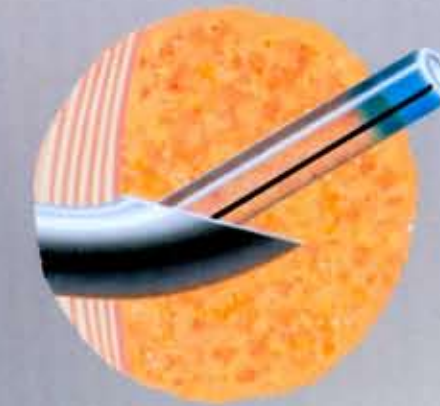
PERIFIX CATHETERS

Convenience, safety and flexibility are the hallmarks of B. Braun's Perifix catheters. These market-leading catheters are constructed of plasticizer-free polyamide nylon to resist both kinking and stretching. They're also uniquely designed for easier placement and flexibility of application.

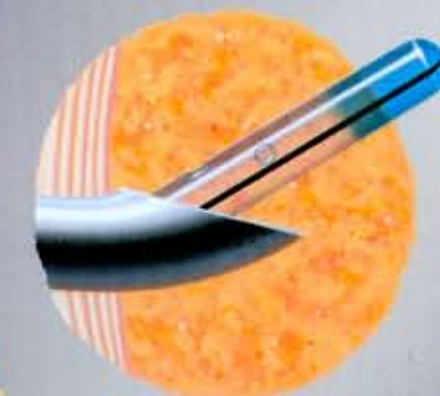
- Threading assist guide fits securely into the needle hub for easy advancement, and eliminates the need for a stylet.
- Twist-lock Tuohy-Borst style catheter connector offers quick, secure connections and greater catheter protection.
- Catheters are available with open tips or rounded atraumatic tip with three lateral sideports.



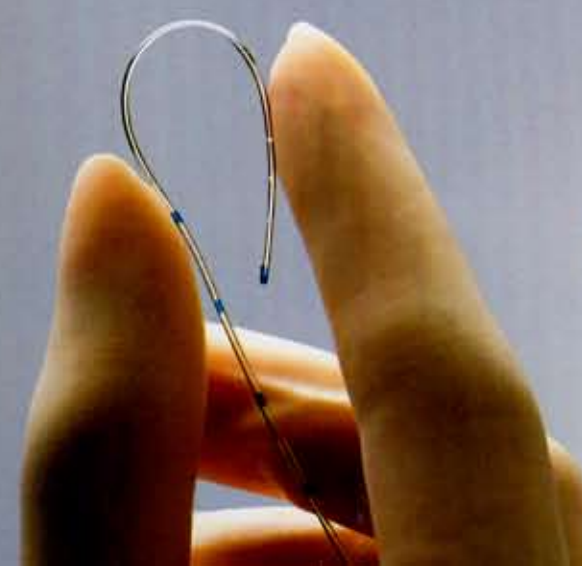
Threading Assist Guide



Open-Tip Polyamide Epidural Catheter



Atraumatic Closed-Tip Polyamide Catheter with Three Lateral Sideports



EPIDURAL

SPINAL

COMBINED SPINAL / EPIDURAL

NERVE BLOCK

CUSTOM TRAYS



B. Braun spinal needles offer you the most complete range of choices for any spinal anesthesia procedure—with the confidence of consistent craftsmanship and quality throughout.

PENCAN™ NEEDLES



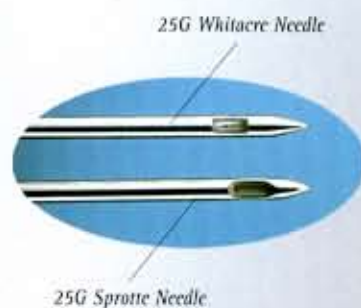
The Pencan needle delivers the highest flow rate of any pencil point needle. (For example, its flow rate in the 25G size is more than double that of the 25G Whitacre needle.) It features a conical tip shape which gives the anesthesia practitioner an enhanced tactile feel. The high strength cannula offers greater stability than comparable needles.*

SPROTTE® NEEDLES



Like traditional Sprotte needles, the improved Sprotte needle from B. Braun delivers quick CSF flashback, high flow rates and a low incidence of post-dural puncture headache (PDPH). What's more, this improved pencil point design strengthens the needle tip and reduces the potential for failed spinals. Our Sprotte needles feature:

- An optimized eyelet-to-inner-lumen ratio*
- Shorter (1.0mm) distance from needle tip to eyelet*
- Polished inner lumen to enhance flow rates*
- Multi-stage cannula washing and vacuum drying process to minimize metal particulates*



ATRAUCAN® NEEDLES



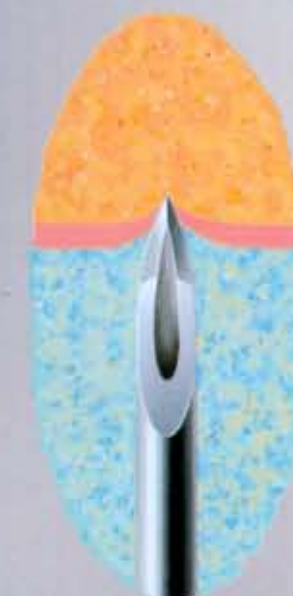
A unique double-bevel design gives the Atraucan needle a dual advantage in spinal anesthesia. During dural puncture, the insertion bevel makes a small, clean incision. The back-cut dilation bevel then separates the dural fibers without cutting or tearing. As a result, smooth needle insertion is achieved with minimized dural puncture trauma and CSF loss.

- Atraucan's PDPH rate is equal to the Whitacre needle, with equal flow rates even though it is a smaller gauge (26G) size.**
- Eliminates tearing of dural fibers and promotes faster dural closure to minimize CSF leakage.*
- Tapered hub allows easy stylet re-insertion.*
- Clear, ridged hub for added control and rapid visualization of CSF.*

SPINOCAN®



The Quincke bevel Spinocan needle from B. Braun offers superior needle stiffness and stability.* It is designed with a precision ground stylet to minimize tissue coring, and a clear, ridged hub for added control and rapid visualization of CSF. Spinocan needles are available in a wide range of lengths and 18-29 gauge sizes.



The Atraucan insertion bevel makes a small incision in the dura.



Atraucan's back-cut dilation bevel then parts the dural fibers.



ESPOCAN® COMBINED SPINAL/EPIDURAL

The combined spinal/epidural (CSE) technique offers anesthesiologists the best of both worlds: the rapid onset of spinal anesthesia and the prolonged pain relief possibilities of an epidural.

With a patented backeye lumen in its heel, the B. Braun Espocan needle is the ideal choice for CSE procedures. Espocan is engineered to direct the epidural catheter, when inserted, away from the dural puncture site. This design allows the spinal needle and epidural catheter to follow separate paths—and lessens the chance of catheter migration through the dura.*

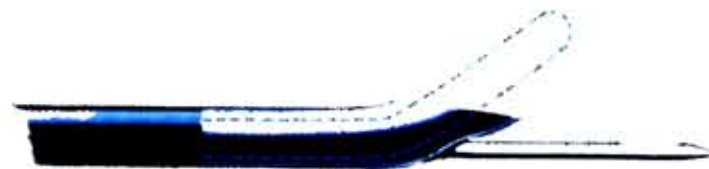
Espocan trays combine special 17G or 18G Tuohy epidural needles with either long 25G Pencan™ pencil point needles, long 27G Quincke or 27G Pencan pencil point needles with centering sleeves.

ESPOCAN SPINAL NEEDLES FEATURE:

A centering sleeve to direct the spinal needle through the backeye lumen.

A friction-fit hub to stabilize the spinal needle after the dura is pierced.

Quincke needles and Pencan pencil point needles both feature a 15mm spinal needle extension.

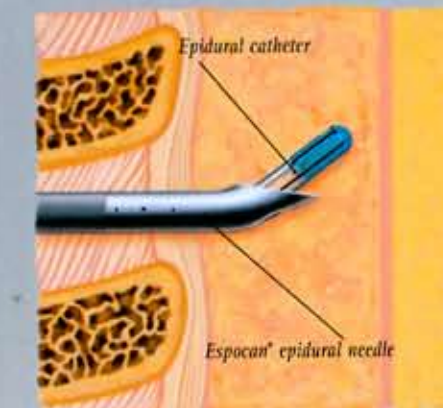
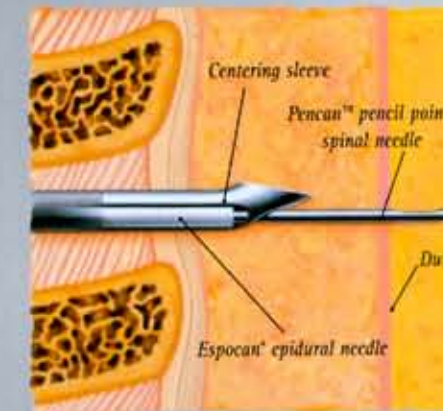


Espocan's special backeye lumen is sized to permit the spinal needle to pass through, but is too small for passage of the epidural catheter.



The Espocan combined spinal/epidural needle helps you achieve the valuable benefits of CSE...

- rapid onset and low dosage of spinal anesthesia
 - extended duration of epidural anesthesia
- ...with a patented method that offers:
- minimized possibility of sub-arachnoid catheter placement
 - enhanced patient safety
 - better tactile feel since needle-to-needle contact is avoided





The Competitive Edge ◊ FOR BETTER UTILIZATION OF RESOURCES

At B. Braun, one of our most important priorities is finding new ways to produce and distribute the products you need cost-effectively. We recognize your administrative challenges—from positive outcomes to better utilization of resources—and keep them firmly in mind in developing better ways to serve your facility.

Our experience spans a wide range of healthcare disciplines—from pain control to vascular access, pharmacy admixture, IV therapy, oncology, cardiovascular and critical care. As a result, we can share valuable experience in all areas of purchasing, customization and support.

The bottom line is simple: The competitive edge you need today requires the right combination of clinical and financial efficiency. B. Braun delivers everything you need, and more.

The Supporting Edge ◊ THROUGH VALUE-ADDED PROGRAMS

When you work with B. Braun, our many educational, clinical and administrative support programs are at your disposal:

RN CUSTOMER RELATIONS LINE

Questions? Our toll-free clinical information line is staffed by a team of experienced RNs. They can provide immediate answers to all your questions about B. Braun pain control products—from general information to critical details such as the latex content of specific trays.

PRODUCTS FOR THE CONTINUUM OF CARE

B. Braun offers many products ideal for use at sites away from the traditional hospital or facility. These resources are further supported by dedicated professionals who can address your needs throughout the continuum of care.



IN-SERVICE TRAINING

To help you implement new products and techniques, B. Braun offers comprehensive in-service training programs. These programs are available for all your anesthesiology staff—including anesthesiologists, CRNAs, PACU and floor nurses. In-service programs can be tailored to your specific needs from a variety of resources, including: Product application demonstrations and training, training videos, slide series, in-service charts and support literature.

B. BRAUN FELLOWSHIP GRANTS

B. Braun has recently established three anesthesia fellowship grants to further the study and practice of regional anesthesia. Through the American Society of Regional Anesthesia (ASRA), a fellowship in Regional Anesthesia and a fellowship in Pain Management are awarded annually. In addition, an annual fellowship in Obstetrical Anesthesia is awarded through the Society of Obstetric Anesthesia and Perinatology (SOAP).

DISTRIBUTION

B. Braun is able to work directly with Group Purchasing Organizations (GPOs) and Integrated Healthcare Networks (IHNs) to help ensure the right products move into and through your facility with smooth cost-efficiency. Our EDI ability with major distributors allows us to closely monitor your usage trends and to recommend changes wherever they can help your bottom line.

B | BRAUN

B. Braun Medical Inc.
824 Twelfth Avenue
Bethlehem, PA 18018

Custom Anesthesia Trays

All B. Braun anesthesia trays are available customized—designed precisely the way individual technique and procedures require. In fact, our custom tray program offers you unparalleled flexibility in component selection, tray set-up and ordering requirements.

Trays can be customized by arranging, adding or removing products from the standard tray configuration. We can also include your preferred safety accessories, from needle-block foam to 3M DuraPrep™ surgical solution and Biopatch™ antimicrobial dressings.

And because B. Braun custom trays include only what your procedures require, they eliminate extra components that can incur unnecessary costs and add to packaging waste. The result is something everyone can appreciate: more convenience for you, and greater cost-efficiency for your hospital.

THE BUILT-IN ADVANTAGES OF B. BRAUN CUSTOM TRAYS INCLUDE:

- *Cost control—trays contain only the necessary components.*
- *Standardized inventory—your purchasing department avoids the cost and effort of stocking multiple trays.*
- *Less packaging waste—recyclable trays simplify storage and disposal.*
- *Individually-designed trays enhance your procedures, allowing you to work more comfortably and efficiently.*
- *Custom trays save anesthesia personnel valuable set-up time.*



Smaller, lower profile packaging is available for trays with fewer components.



3M DuraPrep™ Applicator and Solution



Biopatch™ Antimicrobial Dressing



Needle Block Foam

Nerve

Many surgeries of the shoulder, arm or hand can be performed using brachial plexus anesthesia. Like spinal and epidural anesthesia, brachial plexus nerve blocks are a specialized technique, and require a high degree of safety, accuracy and precision.

B. Braun's Stimuplex[®] and Plexufix[®] nerve block products are clinically renowned for their quality as well as for a wide range of convenient features.



STIMUPLEX[®] NERVE BLOCK SYSTEM

The Stimuplex-DIG peripheral nerve stimulator allows you to locate nerves with greater accuracy. Every component of the Stimuplex system is engineered to ensure pinpoint precision with maximum delivery of anesthetic:

- Constant current transmission—regardless of variable tissue resistance.
- Low milliamp range (0-5.0mA)—protects against trauma to tissue or nerves.
- Short pulse width—pulse pattern of 0.1 milliseconds triggers motor nerves (not sensory) to optimize approach.
- Variable frequency selection—allows precise control for each patient and procedure.
- Low battery and impulse indicator lights.

The Stimuplex-DIG is used with Stimuplex insulated short-bevel nerve stimulator needles, which offer:

- Enhanced accuracy—current exits from needle tip.
- Convenience—pre-attached extension sets facilitate “immobile needle” technique.
- Selection—needles are available in four different gauge/length configurations.
- Atraumatic design—30° short-bevel needle tip for enhanced fascial click and tactile feel; minimizes potential for nerve trauma.



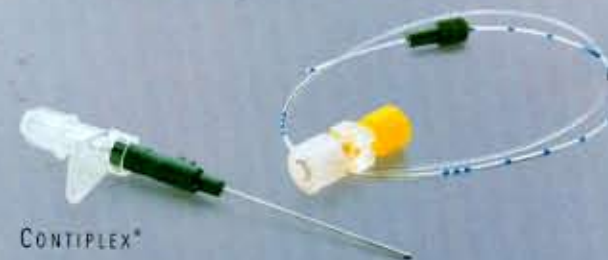
Block

PLEXUFIX[®]



B. Braun's atraumatic short-bevel B-Plex[®] needles are designed for safe, controlled penetration in brachial plexus anesthesia. The unique bevel reduces the risk of trauma to nerves or blood vessels, and also enhances fascial click for accurate delivery of anesthetic.

- Pre-attached smallbore extension set keeps needle immobile during injection.
- All extension sets feature secure Luer lock connections.



CONTIPLEX[®]

Working in the same anatomy as Plexufix brachial plexus needles, the Contiplex needle/introducer offers the added benefit of continuous brachial plexus anesthesia. This is particularly helpful during long procedures, or for post-operative pain relief after shoulder, arm and hand surgeries.

- The short 20G polyamide catheter is left in the nerve bundle, permitting prolonged blockade.
- FEP introducer over atraumatic, short-bevel B-Plex needle ensures proper catheter placement.
- Special bevel design reduces risk of nerve lesion and blood vessel damage and enhances fascial click.
- Threading assist guide facilitates smooth catheter advancement.
- Plasticizer-free catheter provides excellent in-dwelling characteristics.

