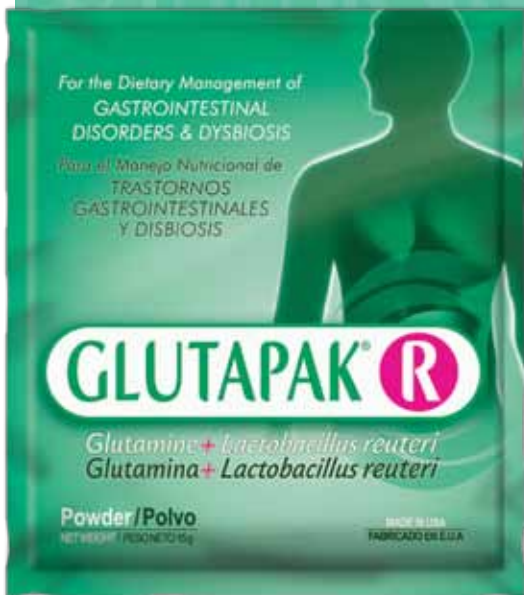
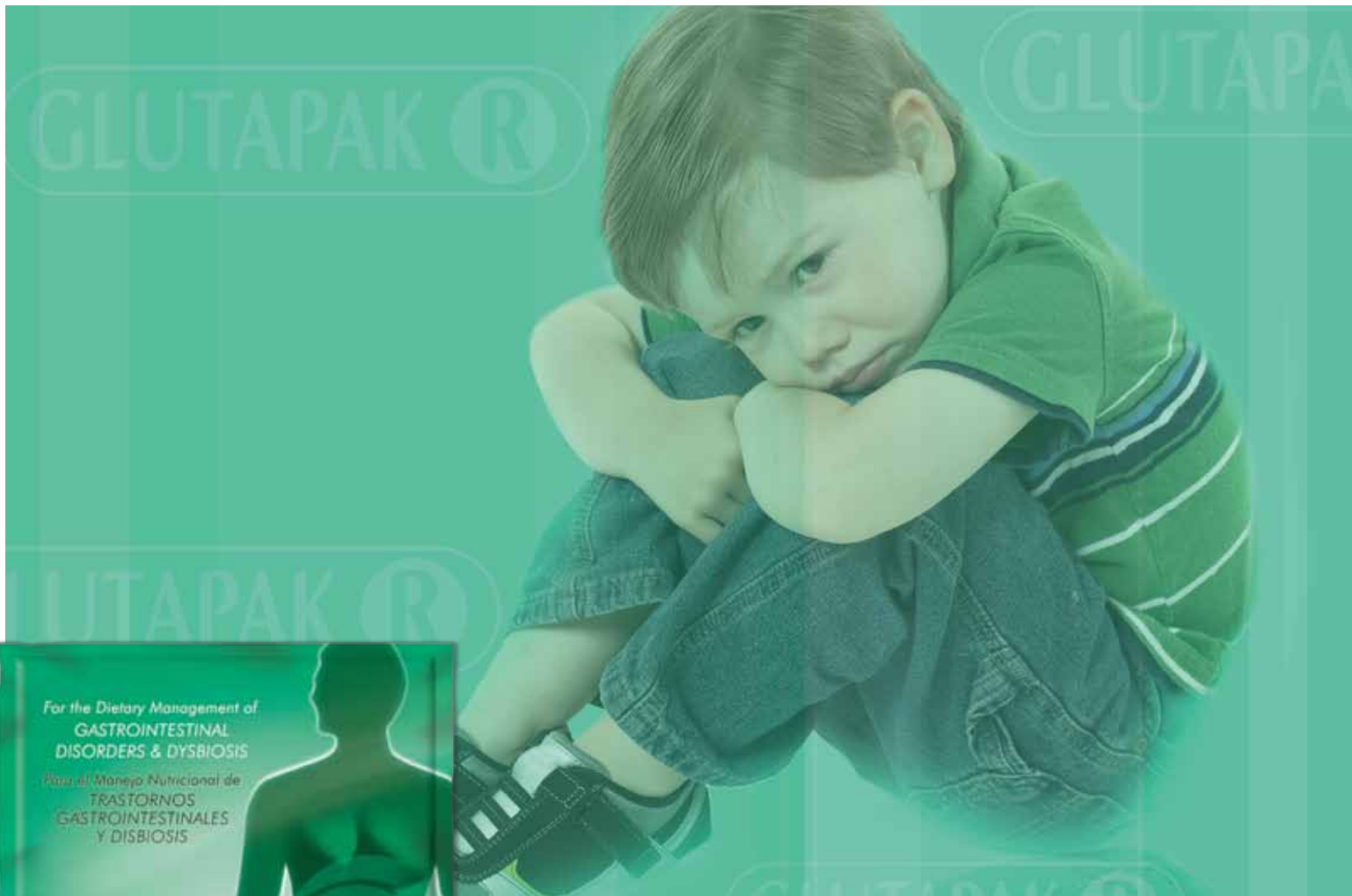


GLUTAPAK® R

Powerful Combination that Protects and Restores Intestinal Health

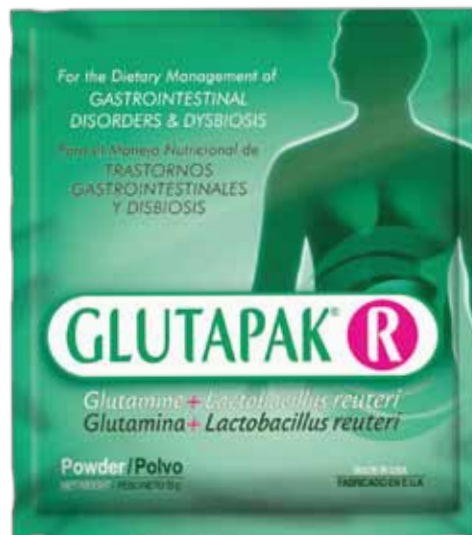


For the Dietary Management of Gastrointestinal Disorders and Dysbiosis in Children



Nutrition & medical products for a healthier life

For the Dietary Management of Gastrointestinal Disorders and Dysbiosis in Children



| Presentation: Powder | | | |
|----------------------|------------|------------|--|
| Catalog No. | Units/Case | Unit Size | Content |
| 70022 | 50 sachets | 15g sachet | 10g of L-glutamine and 10 ⁸ CFUs of <i>L. reuteri</i> Protectis |

Glutamine



Lactobacillus reuteri

- ✓ Glutamine is a source of energy for gastrointestinal tract cells.
- ✓ Glutamine helps repair damage to the intestinal mucosa caused by disease.
- ✓ Glutamine has been clinically proven to reduce intestinal distress and improve bowel function.

- ✓ Reuteri is a superior probiotic that fights off rotavirus and other pathogens that cause diarrhea and gastrointestinal disorders.
- ✓ Reuteri colonizes the intestinal mucosa and prevents bacterial overgrowth by producing powerful antimicrobial substances.
- ✓ Reuteri has been clinically proven to reduce diarrhea and restore the intestinal flora.

Recommendations*

To counteract the causes of malabsorption and protect the gastrointestinal tract:

Infants and Children ≤ 20 kg: 0.5 g/kg/day
 Children >20 kg: 1-3 sachets/day, depending on weight

Preparation and Administration

For oral use: Mix Glutapak® R with 60-120 cc (2-4oz) of water, beverage, formula or food at a temperature range of 10°C – 45°C (50°F – 113°F) and consume immediately. Glutapak® R should not be mixed at extremely hot (above 45°C) or extremely cold (below 10°C) temperatures, because this may affect the *Lactobacillus reuteri*.

For enteral use: Mix Glutapak® R with 60-120 cc (2-4oz) of water and administer through feeding tube immediately. Flush feeding tube before and after administration. Glutapak® R should not be mixed with enteral formulas administered through feeding tube, since the addition of Glutapak® R may cause formula to thicken considerably and clog tube.

GLUTAPAK® R IS NOT A COMPLETE DIET
 GLUTAPAK® R IS NOT FOR PARENTERAL USE
 DO NOT HEAT, FREEZE OR AUTOCLAVE GLUTAPAK® R

*Glutapak® R recommendations are based on glutamine and *Lactobacillus reuteri* dosages that have been clinically demonstrated to reduce symptoms of diarrhea, gastrointestinal disorders and gastrointestinal side-effects of antineoplastic therapy as well as improve gastrointestinal function (see Glutapak® R Product Monograph).

Protected by corresponding patents 5,849,289 and 7,374,924 and other issued and pending patents.

BioGaia
 Clinically Proven Probiotics
L. reuteri licensed from
 BioGaia AB Sweden
 www.biogaia.com



Victus, Inc.
 4918 SouthWest 74th Ct.
 Miami, FL 33155
 Phone: 305.663.2129
 Fax: 305.663.1843
 www.victus.com